

Focus on Young Children



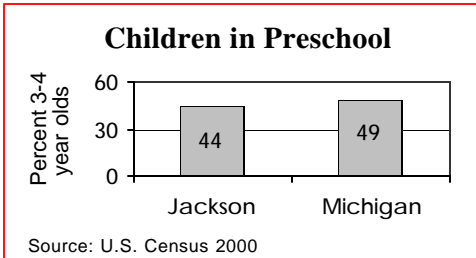
Live Births

	1990	1996	2002
	2,395	2,058	2,000

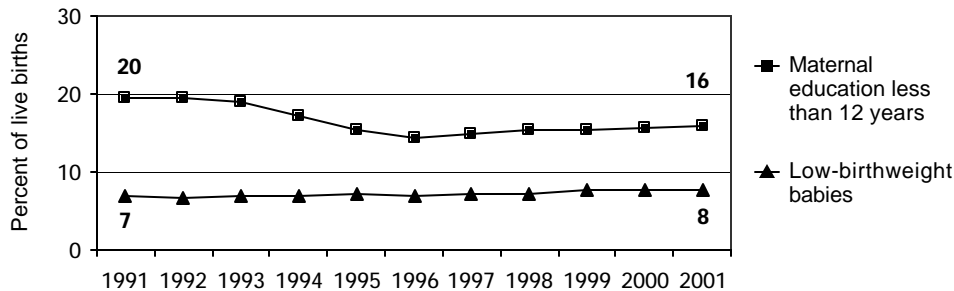
	Number	Percent	Michigan
No listed paternity (2002)	264	13.2%	13.6%
Birth defects (1999-2001)	141	6.9%	6.3%
Lead poisoning in toddlers, ages 1-2			
– tested	364	8.9%	19.2%
– poisoned (% of tested)	10	2.8%	3.3%

Child Care & Early Education

	Infants	Toddlers	Preschool	School-age
Monthly costs (full-time/one child - 2004)	\$452	\$432	\$424	\$441
– percent average wage per job	16.7%	15.9%	15.6%	16.3%
Children in subsidized child care				
– ages 0-30 mos.	1,042			
– ages 31 mos.-5 yrs.	1,462			
– ages 6-12	1,367			
Total (includes children over age 12)	3,908			



Infants at Risk: 1990-2002 (three-year rolling averages)



Source: Michigan Department of Community Health, Vital Records and Health Data Development Section

Background

Population

	2000	2003
Total population	158,724	162,321
Child population		
– ages 0-17	40,472	40,107
– ages 0-4	10,408	9,982
– ages 5-9	11,557	10,853
– ages 10-14	11,857	12,208
– ages 15-19	10,607	11,220

Economic Climate

Average wage per job (2002)	\$32,547
Unemployment	8.0%
Percent change in Food Assistance Program Participation (2001 vs. 2003)	34.6%

Economic Security

	Number	Rate ¹	Michigan ¹
Children with child support order (April 04)	18,788	46.5%	38.5%
– average amount received per child	\$162	—	\$180
– percent non-custodial parents making no payment in previous six months	—	45.5%	51.5%
Children receiving FIP cash assistance ²	2,280	5.7%	6.0%
Children in Food Assistance Program ³	6,527	15.4%	14.8%

Children with Special Needs

Students in Special Education	4,127	15.4%	14.3%
Children receiving Supplemental Security Income (rate per 1,000)	639	15.9	12.7

Health Care

Children, ages 0-18, insured by...			
– Medicaid	12,807	30.2%	27.5%
– MICHild	748	1.8%	1.3%
Children, ages 1-14, hospitalized for asthma ⁴ (rate per 10,000)	58	19.0	25.4

Juvenile Justice — 2002

Ages 10-17 (rates per 1,000)

Violent crime arrests	58	3.0	3.3
Property crime arrests	194	10.1	19.9

¹ All percentages are percent of all children except for Students in Special Education.

² Family Independence Program.

³ Federal Food Stamp Program.

⁴ Rate is reported for the three-year period 2000-2002 only for counties with a total number over 19.

* Rate not calculated because of low incidence of events or unavailable data.

Note: All data are from 2003 unless otherwise noted.

Trends in Child Well-Being

	Percent Change in Rate						Base year		Recent year			
	Worse			Better			Number	Rate	Number	Rate	Rank ¹	
	80	60	40	20	0	20	40	60	80			
Economic Security 1995 vs. 2000												
Children in poverty.												
– ages 0-17							24	7,219	18.2%	5,400	13.6%	31 of 83
– ages 5-17							30	4,573	16.1%	3,330	11.0%	29 of 83
Students receiving free/reduced priced school lunches (1995-96 vs. 2003-04)	18	7,916	31.3%	9,888	37.0%	33 of 82						
Child Health Avg 1994-96 vs. 2000-02												
Less than adequate prenatal care							n/a	*	n/a	*	* of 82	
Low-birthweight babies	6	151	7.2%	157	7.7%	68 of 83						
Infant mortality (per 1,000)	21	16	7.0	17	8.5	38 of 55						
Child deaths, ages 1-14 (per 100,000)	37	9	28.4	6	17.9	9 of 40						
Child Safety (per 1,000) FY1995 vs. FY2003												
Children in investigated families	95	1,998	49.8	3,921	97.0	69 of 83						
Confirmed victims of abuse or neglect	149	307	7.6	768	19.0	72 of 82						
Children in out-of-home care	37	240	6.0	333	8.2	60 of 80						
– abuse or neglect	41	218	5.4	309	7.6	64 of 79						
– delinquency	8	22	0.5	24	0.6	13 of 51						
Adolescence Avg 1994-96 vs. 2000-02												
Births to teens, ages 15-17 (per 1,000)	30	124	40.5	94	28.3	75 of 81						
Deaths by accident, homicide, suicide for teens ages 15-19 (per 100,000)	10	5	47.9	5	43.1	14 of 43						
High school dropouts (1995-96 vs. 2001-02)	38	342	5.4%	226	3.4%	50 of 79						
Education 2001-02 vs. 2003-04 (Students not meeting proficiency standards in math)												
Fourth graders	23	708	37.4%	492	28.8%	59 of 82						
Eighth graders	8	857	46.9%	869	43.1%	74 of 82						
Class of 2001 vs. class of 2003	25	453	34.3%	598	42.7%	60 of 82						

n/a=not available

¹ A ranking of 1 means a county has the “best” rate compared to other counties in the state.

Missing bars indicate no change or a rate could not be calculated. Percentage change is calculated with unrounded rates.

* Sometimes a rate could not be calculated because of low incidence of events or unavailable data.