

Focus on Young Children



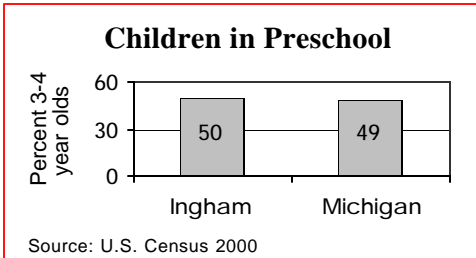
Live Births

	1990	1996	2002
	4,595	3,952	3,580

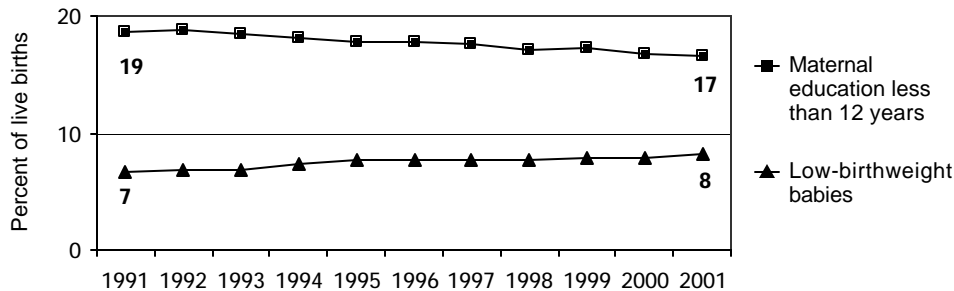
	Number	Percent	Michigan
No listed paternity (2002)	464	13.0%	13.6%
Birth defects (1999-2001)	310	8.3%	6.3%
Lead poisoning in toddlers, ages 1-2			
– tested	1,074	15.0%	19.2%
– poisoned (% of tested)	14	1.3%	3.3%

Child Care & Early Education

	Infants	Toddlers	Preschool	School-age
Monthly costs (full-time/one child - 2004)	\$530	\$507	\$487	\$460
– percent average wage per job	17.8%	17.0%	16.4%	15.5%
Children in subsidized child care				
– ages 0-30 mos.	2,268			
– ages 31 mos.-5 yrs.	3,119			
– ages 6-12	3,138			
Total (includes children over age 12)	8,598			



Infants at Risk: 1990-2002 (three-year rolling averages)



Source: Michigan Department of Community Health, Vital Records and Health Data Development Section

Background

Population

	2000	2003
Total population	279,474	282,030
Child population		
– ages 0-17	65,526	64,979
– ages 0-4	17,885	17,932
– ages 5-9	18,362	17,788
– ages 10-14	18,351	18,529
– ages 15-19	26,229	25,107

Economic Climate

Average wage per job (2002)	\$35,701
Unemployment	5.4%
Percent change in Food Assistance Program Participation (2001 vs. 2003)	22.4%

Economic Security

	Number	Rate ¹	Michigan ¹
Children with child support order (April 04)	27,753	42.3%	38.5%
– average amount received per child	\$187	—	\$180
– percent non-custodial parents making no payment in previous six months	—	51.1%	51.5%
Children receiving FIP cash assistance ²	3,122	4.4%	6.0%
Children in Food Assistance Program ³	10,795	15.0%	14.8%

Children with Special Needs

Students in Special Education	7,923	16.1%	14.3%
Children receiving Supplemental Security Income (rate per 1,000)	923	13.1	12.7

Health Care

Children, ages 0-18, insured by...			
– Medicaid	20,794	29.0%	27.5%
– MICHild	1,007	1.4%	1.3%
Children, ages 1-14, hospitalized for asthma ⁴ (rate per 10,000)	132	25.7	25.4

Juvenile Justice — 2002

Ages 10-17 (rates per 1,000)			
Violent crime arrests	194	6.6	3.3
Property crime arrests	400	13.5	19.9

¹ All percentages are percent of all children except for Students in Special Education.

² Family Independence Program.

³ Federal Food Stamp Program.

⁴ Rate is reported for the three-year period 2000-2002 only for counties with a total number over 19.

* Rate not calculated because of low incidence of events or unavailable data.

Note: All data are from 2003 unless otherwise noted.

Trends in Child Well-Being

	Percent Change in Rate						Base year		Recent year			
	Worse			Better			Number	Rate	Number	Rate	Rank ¹	
	80	60	40	20	0	20	40	60	80			
Economic Security 1995 vs. 2000												
Children in poverty.												
– ages 0-17												
– ages 5-17												
Students receiving free/reduced priced school lunches (1995-96 vs. 2003-04)												
Child Health Avg 1994-96 vs. 2000-02												
Less than adequate prenatal care												
Low-birthweight babies												
Infant mortality (per 1,000)												
Child deaths, ages 1-14 (per 100,000)												
Child Safety (per 1,000) FY1995 vs. FY2003												
Children in investigated families												
Confirmed victims of abuse or neglect												
Children in out-of-home care												
– abuse or neglect												
– delinquency												
Adolescence Avg 1994-96 vs. 2000-02												
Births to teens, ages 15-17 (per 1,000)												
Deaths by accident, homicide, suicide for teens ages 15-19 (per 100,000)												
High school dropouts (1995-96 vs. 2001-02)												
Education 2001-02 vs. 2003-04 (Students not meeting proficiency standards in math)												
Fourth graders												
Eighth graders												
Class of 2001 vs. class of 2003												

¹ A ranking of 1 means a county has the "best" rate compared to other counties in the state.

Missing bars indicate no change or a rate could not be calculated. Percentage change is calculated with unrounded rates.

* Sometimes a rate could not be calculated because of low incidence of events or unavailable data.