

Focus on Young Children



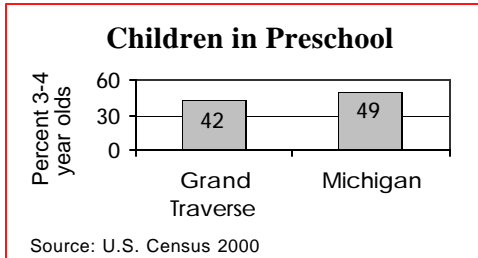
Live Births

	1990	1996	2002
	935	877	921

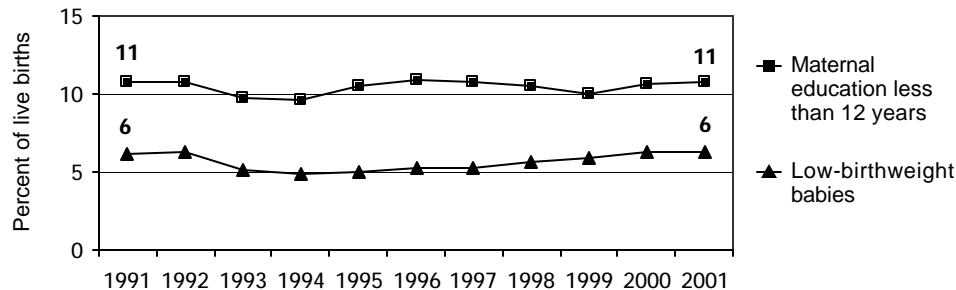
	Number	Percent	Michigan
No listed paternity (2002)	67	7.3%	13.6%
Birth defects (1999-2001)	55	5.7%	6.3%
Lead poisoning in toddlers, ages 1-2			
– tested	44	2.3%	19.2%
– poisoned (% of tested)	1	2.3%	3.3%

Child Care & Early Education

	Infants	Toddlers	Preschool	School-age
Monthly costs (full-time/one child - 2004)	\$531	\$491	\$453	\$505
– percent average wage per job	21.4%	19.8%	18.2%	20.4%
Children in subsidized child care				
– ages 0-30 mos.+	513			
– ages 31 mos.-5 yrs.+	827			
– ages 6-12+	678			
Total (includes children over age 12) +	2,027			



Infants at Risk: 1990-2002 (three-year rolling averages)



Source: Michigan Department of Community Health, Vital Records and Health Data Development Section

Background

Population

	2000	2003
Total population	77,980	82,011
Child population		
– ages 0-17	19,577	19,030
– ages 0-4	4,689	4,557
– ages 5-9	5,359	4,952
– ages 10-14	5,962	5,848
– ages 15-19	5,558	5,881

Economic Climate

Average wage per job (2002)	\$29,794
Unemployment	6.5%
Percent change in Food Assistance Program Participation (2001 vs. 2003)+	68.5%

Economic Security

	Number	Rate ¹	Michigan ¹
Children with child support order (April 04)	5,428	27.8%	38.5%
– average amount received per child	\$214	—	\$180
– percent non-custodial parents making no payment in previous six months	—	41.7%	51.5%
Children receiving FIP cash assistance ²⁺	345	1.4%	6.0%
Children in Food Assistance Program ³⁺	2,167	8.3%	14.8%

Children with Special Needs

Students in Special Education	2,181	16.6%	14.3%
Children receiving Supplemental Security Income (rate per 1,000)+	190	7.8	12.7

Health Care

Children, ages 0-18, insured by...			
– Medicaid+	5,585	21.5%	27.5%
– MICHild	493	2.4%	1.3%
Children, ages 1-14, hospitalized for asthma ⁴ (rate per 10,000)	18	12.9	25.4

Juvenile Justice — 2002
Ages 10-17 (rates per 1,000)

Violent crime arrests	32	3.3	3.3
Property crime arrests	558	57.7	19.9

(+Numbers are combined with Leelanau.)

¹ All percentages are percent of all children except for Students in Special Education.

² Family Independence Program.

³ Federal Food Stamp Program.

⁴ Rate is reported for the three-year period 2000-2002 only for counties with a total number over 19.

* Rate not calculated because of low incidence of events or unavailable data.

Note: All data are from 2003 unless otherwise noted.

Trends in Child Well-Being

	Percent Change in Rate					Base year		Recent year			
	Worse		0	Better		Number	Rate	Number	Rate	Rank ¹	
	80	60	40	20	0	20	40	60	80		
Economic Security 1995 vs. 2000											
Children in poverty.											
– ages 0-17											
– ages 5-17											
Students receiving free/reduced priced school lunches (1995-96 vs. 2003-04)											
Child Health Avg 1994-96 vs. 2000-02											
Less than adequate prenatal care											
Low-birthweight babies											
Infant mortality (per 1,000)											
Child deaths, ages 1-14 (per 100,000)											
Child Safety (per 1,000) FY1995 vs. FY2003											
Children in investigated families +											
Confirmed victims of abuse or neglect +											
Children in out-of-home care											
– abuse or neglect											
– delinquency											
(+Numbers are combined with Leelanau.)											
Adolescence Avg 1994-96 vs. 2000-02											
Births to teens, ages 15-17 (per 1,000)											
Deaths by accident, homicide, suicide for teens ages 15-19 (per 100,000)											
High school dropouts (1995-96 vs. 2001-02)											
Education 2001-02 vs. 2003-04											
(Students not meeting proficiency standards in math)											
Fourth graders											
Eighth graders											
Class of 2001 vs. class of 2003											

¹ A ranking of 1 means a county has the "best" rate compared to other counties in the state.

Missing bars indicate no change or a rate could not be calculated. Percentage change is calculated with unrounded rates.

* Sometimes a rate could not be calculated because of low incidence of events or unavailable data.