

Focus on Young Children



Live Births

1990	1996	2002
297	285	268

	Number	Percent	Michigan
No listed paternity (2002)	20	7.5%	13.6%
Birth defects (1999-2001)	18	6.0%	6.3%
Lead poisoning in toddlers, ages 1-2			
– tested	41	7.4%	19.2%
– poisoned (% of tested)	1	2.4%	3.3%

Child Care & Early Education

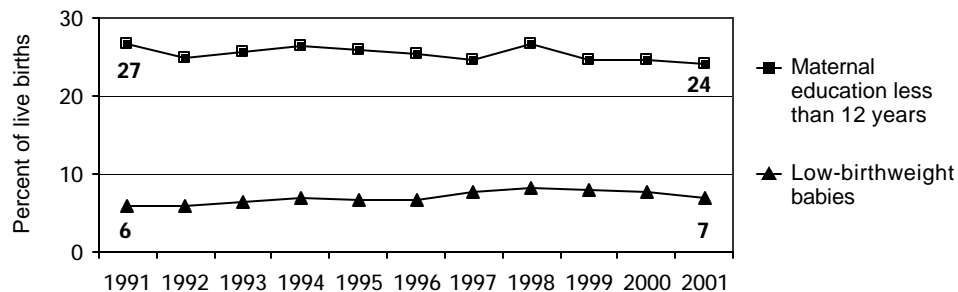
	Infants	Toddlers	Preschool	School-age
Monthly costs (full-time/one child - 2004)	\$387	\$378	\$379	\$377
– percent average wage per job	18.9%	18.4%	18.4%	18.3%
Children in subsidized child care				
– ages 0-30 mos.	160			
– ages 31 mos.-5 yrs.	228			
– ages 6-12	266			
Total (includes children over age 12)	660			

Children in Preschool



Source: U.S. Census 2000

Infants at Risk: 1990-2002 (three-year rolling averages)



Source: Michigan Department of Community Health, Vital Records and Health Data Development Section

Background

Population

	2000	2003
Total population	26,126	26,939
Child population		
– ages 0-17	5,988	5,914
– ages 0-4	1,412	1,419
– ages 5-9	1,602	1,507
– ages 10-14	1,853	1,849
– ages 15-19	1,682	1,806

Economic Climate

Average wage per job (2002)	\$24,637
Unemployment	11.3%
Percent change in Food Assistance Program Participation (2001 vs. 2003)	41.6%

Economic Security

	Number	Rate ¹	Michigan ¹
Children with child support order (April 04)	1,913	31.8%	38.5%
– average amount received per child	\$159	—	\$180
– percent non-custodial parents making no payment in previous six months	—	47.4%	51.5%
Children receiving FIP cash assistance ²	235	4.0%	6.0%
Children in Food Assistance Program ³	1,122	17.6%	14.8%

Children with Special Needs

Students in Special Education	636	17.1%	14.3%
Children receiving Supplemental Security Income (rate per 1,000)	65	11.1	12.7

Health Care

Children, ages 0-18, insured by...			
– Medicaid	2,410	37.8%	27.5%
– MICHild	161	2.5%	1.3%
Children, ages 1-14, hospitalized for asthma ⁴ (rate per 10,000)	n/a	*	25.4

Juvenile Justice — 2002

Ages 10-17 (rates per 1,000)

Violent crime arrests	22	7.4	3.3
Property crime arrests	108	36.2	19.9

n/a=not available

¹ All percentages are percent of all children except for Students in Special Education.² Family Independence Program.³ Federal Food Stamp Program.⁴ Rate is reported for the three-year period 2000-2002 only for counties with a total number over 19.

* Rate not calculated because of low incidence of events or unavailable data.

Note: All data are from 2003 unless otherwise noted.

Trends in Child Well-Being

	Percent Change in Rate					Base year		Recent year			
	Worse		0	Better		Number	Rate	Number	Rate	Rank ¹	
	80	60	40	20	0	20	40	60	80		
Economic Security 1995 vs. 2000											
Children in poverty.											
– ages 0-17											
– ages 5-17											
Students receiving free/reduced priced school lunches (1995-96 vs. 2003-04)											
Child Health Avg 1994-96 vs. 2000-02											
Less than adequate prenatal care											
Low-birthweight babies											
Infant mortality (per 1,000)											
Child deaths, ages 1-14 (per 100,000)											
Child Safety (per 1,000) FY1995 vs. FY2003											
Children in investigated families											
Confirmed victims of abuse or neglect											
Children in out-of-home care											
– abuse or neglect											
– delinquency											
Adolescence Avg 1994-96 vs. 2000-02											
Births to teens, ages 15-17 (per 1,000)											
Deaths by accident, homicide, suicide for teens ages 15-19 (per 100,000)											
High school dropouts (1995-96 vs. 2001-02)											
Education 2001-02 vs. 2003-04 (Students not meeting proficiency standards in math)											
Fourth graders											
Eighth graders											
Class of 2001 vs. class of 2003											

¹ A ranking of 1 means a county has the "best" rate compared to other counties in the state.

Missing bars indicate no change or a rate could not be calculated. Percentage change is calculated with unrounded rates.

* Sometimes a rate could not be calculated because of low incidence of events or unavailable data.