

Focus on Young Children



Live Births

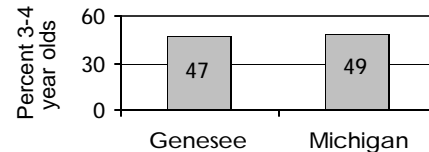
	1990	1996	2002
	7,653	6,434	6,196

	Number	Percent	Michigan
No listed paternity (2002)	1,167	18.8%	13.6%
Birth defects (1999-2001)	297	4.6%	6.3%
Lead poisoning in toddlers, ages 1-2			
– tested	2,155	17.1%	19.2%
– poisoned (% of tested)	28	1.3%	3.3%

Child Care & Early Education

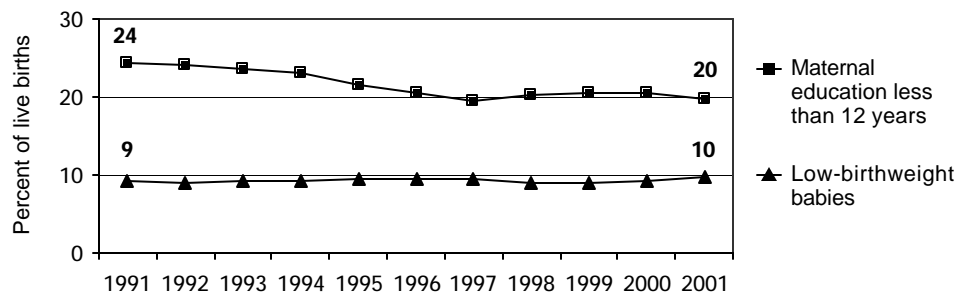
	Infants	Toddlers	Preschool	School-age
Monthly costs (full-time/one child - 2004)	\$511	\$494	\$479	\$471
– percent average wage per job	17.1%	16.5%	16.0%	15.8%
Children in subsidized child care				
– ages 0-30 mos.	5,045			
– ages 31 mos.-5 yrs.	7,247			
– ages 6-12	9,010			
Total (includes children over age 12)	21,635			

Children in Preschool



Source: U.S. Census 2000

Infants at Risk: 1990-2002 (three-year rolling averages)



Source: Michigan Department of Community Health, Vital Records and Health Data Development Section

Background

Population

	2000	2003
Total population	436,943	442,250
Child population		
– ages 0-17	118,989	117,994
– ages 0-4	31,489	30,605
– ages 5-9	34,764	32,479
– ages 10-14	33,499	35,429
– ages 15-19	31,274	30,658

Economic Climate

Average wage per job (2002)	\$35,837
Unemployment	9.7%
Percent change in Food Assistance Program Participation (2001 vs. 2003)	29.1%

Economic Security

	Number	Rate ¹	Michigan ¹
Children with child support order (April 04)	61,639	51.7%	38.5%
– average amount received per child	\$182	—	\$180
– percent non-custodial parents making no payment in previous six months	—	52.8%	51.5%
Children receiving FIP cash assistance ²	12,706	10.7%	6.0%
Children in Food Assistance Program ³	28,547	22.8%	14.8%

Children with Special Needs

Students in Special Education	10,810	13.1%	14.3%
Children receiving Supplemental Security Income (rate per 1,000)	2,459	20.7	12.7

Health Care

Children, ages 0-18, insured by...			
– Medicaid	45,768	36.6%	27.5%
– MICHild	1,899	1.5%	1.3%
Children, ages 1-14, hospitalized for asthma ⁴ (rate per 10,000)	264	28.6	25.4

Juvenile Justice — 2002

Ages 10-17 (rates per 1,000)

Violent crime arrests	192	3.5	3.3
Property crime arrests	1,120	20.5	19.9

¹ All percentages are percent of all children except for Students in Special Education.² Family Independence Program.³ Federal Food Stamp Program.⁴ Rate is reported for the three-year period 2000-2002 only for counties with a total number over 19.

* Rate not calculated because of low incidence of events or unavailable data.

Note: All data are from 2003 unless otherwise noted.

Trends in Child Well-Being

	Percent Change in Rate						Base year		Recent year			
	Worse			Better			Number	Rate	Number	Rate	Rank ¹	
	80	60	40	20	0	20	40	60	80			
Economic Security 1995 vs. 2000												
Children in poverty.												
– ages 0-17							32,704	26.6%	21,547	18.4%	66 of 83	
– ages 5-17							20,705	23.3%	13,648	15.5%	67 of 83	
Students receiving free/reduced priced school lunches (1995-96 vs. 2003-04)							29,832	36.5%	33,233	40.2%	44 of 82	
Child Health Avg 1994-96 vs. 2000-02												
Less than adequate prenatal care							1,120	17.8%	1,100	17.5%	18 of 82	
Low-birthweight babies							609	9.4%	606	9.6%	80 of 83	
Infant mortality (per 1,000)							83	11.1	73	11.6	53 of 55	
Child deaths, ages 1-14 (per 100,000)							31	32.7	26	27.4	27 of 40	
Child Safety (per 1,000) FY1995 vs. FY2003												
Children in investigated families							8,226	67.7	11,887	99.7	75 of 83	
Confirmed victims of abuse or neglect							1,295	10.7	2,409	20.2	74 of 82	
Children in out-of-home care							903	7.4	1,612	13.5	77 of 80	
– abuse or neglect							648	5.3	1,534	12.9	78 of 79	
– delinquency							255	2.1	78	0.7	18 of 51	
Adolescence Avg 1994-96 vs. 2000-02												
Births to teens, ages 15-17 (per 1,000)							375	39.6	255	27.0	72 of 81	
Deaths by accident, homicide, suicide for teens ages 15-19 (per 100,000)							24	80.9	14	46.4	18 of 43	
High school dropouts (1995-96 vs. 2001-02)							1,119	5.4%	685	3.5%	52 of 79	
Education 2001-02 vs. 2003-04 (Students not meeting proficiency standards in math)												
Fourth graders							2,231	36.1%	1,797	32.0%	70 of 82	
Eighth graders							2,851	50.3%	2,743	44.2%	76 of 82	
Class of 2001 vs. class of 2003							1,445	34.9%	1,919	42.9%	61 of 82	

¹ A ranking of 1 means a county has the "best" rate compared to other counties in the state.

Missing bars indicate no change or a rate could not be calculated. Percentage change is calculated with unrounded rates.

* Sometimes a rate could not be calculated because of low incidence of events or unavailable data.