

Focus on Young Children



Live Births

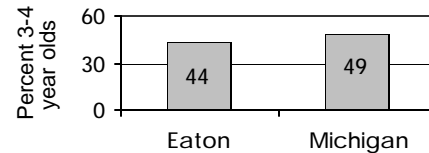
	1990	1996	2002
	1,230	1,243	1,265

	Number	Percent	Michigan
No listed paternity (2002)	110	8.7%	13.6%
Birth defects (1999-2001)	95	7.6%	6.3%
Lead poisoning in toddlers, ages 1-2			
– tested	625	24.4%	19.2%
– poisoned (% of tested)	0	0.0%	3.3%

Child Care & Early Education

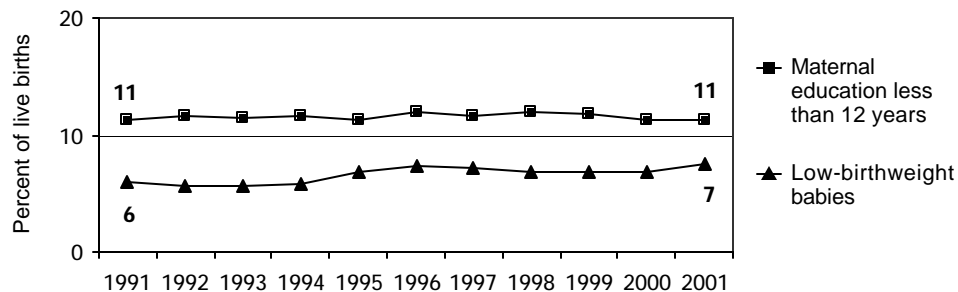
	Infants	Toddlers	Preschool	School-age
Monthly costs (full-time/one child - 2004)	\$501	\$477	\$461	\$454
– percent average wage per job	18.7%	17.8%	17.2%	16.9%
Children in subsidized child care				
– ages 0-30 mos.	634			
– ages 31 mos.-5 yrs.	823			
– ages 6-12	829			
Total (includes children over age 12)	2,301			

Children in Preschool



Source: U.S. Census 2000

Infants at Risk: 1990-2002 (three-year rolling averages)



Source: Michigan Department of Community Health, Vital Records and Health Data Development Section

Background

Population

	2000	2003
Total population	103,916	106,197
Child population		
– ages 0-17	26,923	25,873
– ages 0-4	6,571	6,215
– ages 5-9	7,260	6,985
– ages 10-14	8,092	7,752
– ages 15-19	8,035	8,004

Economic Climate

Average wage per job (2002)	\$32,211
Unemployment	4.3%
Percent change in Food Assistance Program Participation (2001 vs. 2003)	60.8%

Economic Security

	Number	Rate ¹	Michigan ¹
Children with child support order (April 04)	9,247	35.0%	38.5%
– average amount received per child	\$199	—	\$180
– percent non-custodial parents making no payment in previous six months	—	48.4%	51.5%
Children receiving FIP cash assistance ²	635	2.4%	6.0%
Children in Food Assistance Program ³	2,720	9.7%	14.8%

Children with Special Needs

Students in Special Education	2,859	16.9%	14.3%
Children receiving Supplemental Security Income (rate per 1,000)	213	8.0	12.7

Health Care

Children, ages 0-18, insured by...			
– Medicaid	5,532	19.7%	27.5%
– MICHild	349	1.2%	1.3%
Children, ages 1-14, hospitalized for asthma ⁴ (rate per 10,000)	36	18.7	25.4

Juvenile Justice — 2002

Ages 10-17 (rates per 1,000)

Violent crime arrests	8	0.6	3.3
Property crime arrests	58	4.5	19.9

¹ All percentages are percent of all children except for Students in Special Education.² Family Independence Program.³ Federal Food Stamp Program.⁴ Rate is reported for the three-year period 2000-2002 only for counties with a total number over 19.

* Rate not calculated because of low incidence of events or unavailable data.

Note: All data are from 2003 unless otherwise noted.

Trends in Child Well-Being

	Percent Change in Rate					Base year		Recent year				
	Worse		0	Better		Number	Rate	Number	Rate	Rank ¹		
	80	60	40	20	0	20	40	60	80			
Economic Security 1995 vs. 2000												
Children in poverty.												
– ages 0-17								2,821	10.2%	2,280	8.7%	11 of 83
– ages 5-17								1,747	8.5%	1,440	7.0%	10 of 83
Students receiving free/reduced priced school lunches (1995-96 vs. 2003-04)								2,457	16.1%	3,733	22.6%	5 of 82
Child Health Avg 1994-96 vs. 2000-02												
Less than adequate prenatal care								214	16.7%	182	14.2%	8 of 82
Low-birthweight babies								82	6.8%	96	7.5%	64 of 83
Infant mortality (per 1,000)								7	5.8	5	4.1	1 of 55
Child deaths, ages 1-14 (per 100,000)								6	26.8	3	13.1	3 of 40
Child Safety (per 1,000) FY1995 vs. FY2003												
Children in investigated families								777	28.7	1,505	57.0	22 of 83
Confirmed victims of abuse or neglect								93	3.4	303	11.5	43 of 82
Children in out-of-home care								60	2.2	105	4.0	16 of 80
– abuse or neglect								26	1.0	87	3.3	15 of 79
– delinquency								34	1.3	18	0.7	18 of 51
Adolescence Avg 1994-96 vs. 2000-02												
Births to teens, ages 15-17 (per 1,000)								43	19.0	38	15.6	38 of 81
Deaths by accident, homicide, suicide for teens ages 15-19 (per 100,000)								6	79.1	3	41.2	9 of 43
High school dropouts (1995-96 vs. 2001-02)								100	2.3%	113	2.2%	24 of 79
Education 2001-02 vs. 2003-04 (Students not meeting proficiency standards in math)												
Fourth graders								387	33.2%	283	25.8%	47 of 82
Eighth graders								561	43.1%	481	34.5%	47 of 82
Class of 2001 vs. class of 2003								238	24.9%	353	33.4%	28 of 82

¹ A ranking of 1 means a county has the "best" rate compared to other counties in the state.

Missing bars indicate no change or a rate could not be calculated. Percentage change is calculated with unrounded rates.

* Sometimes a rate could not be calculated because of low incidence of events or unavailable data.