

Focus on Young Children



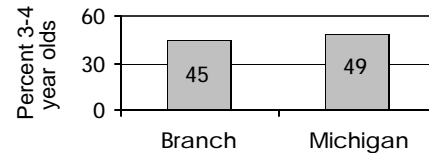
Live Births	1990	1996	2002
	641	525	561

	Number	Percent	Michigan
No listed paternity (2002)	63	11.2%	13.6%
Birth defects (1999-2001)	30	5.1%	6.3%
Lead poisoning in toddlers, ages 1-2			
– tested	130	11.2%	19.2%
– poisoned (% of tested)	1	0.8%	3.3%

Child Care & Early Education

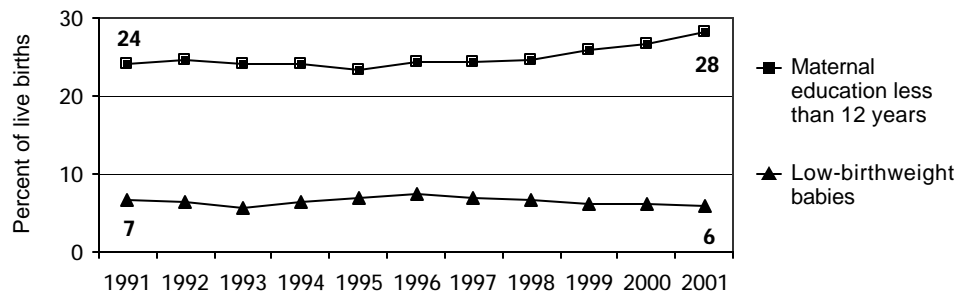
	Infants	Toddlers	Preschool	School-age
Monthly costs (full-time/one child - 2004)	\$382	\$369	\$365	\$335
– percent average wage per job	15.6%	15.1%	15.0%	13.7%
Children in subsidized child care				
– ages 0-30 mos.	269			
– ages 31 mos.-5 yrs.	368			
– ages 6-12	335			
Total (includes children over age 12)	979			

Children in Preschool



Source: U.S. Census 2000

Infants at Risk: 1990-2002 (three-year rolling averages)



Source: Michigan Department of Community Health, Vital Records and Health Data Development Section

Background

Population	2000	2003
Total population	45,871	46,414
Child population		
– ages 0-17	11,562	11,053
– ages 0-4	2,842	2,779
– ages 5-9	3,169	2,888
– ages 10-14	3,462	3,298
– ages 15-19	3,330	3,325

Economic Climate

Average wage per job (2002)	\$29,276
Unemployment	6.9%
Percent change in Food Assistance Program Participation (2001 vs. 2003)	35.6%

Economic Security

	Number	Rate ¹	Michigan ¹
Children with child support order (April 04)	4,471	39.9%	38.5%
– average amount received per child	\$185	—	\$180
– percent non-custodial parents making no payment in previous six months	—	49.2%	51.5%
Children receiving FIP cash assistance ²	460	4.0%	6.0%
Children in Food Assistance Program ³	1,614	13.6%	14.8%

Children with Special Needs

Students in Special Education	1,047	16.0%	14.3%
Children receiving Supplemental Security Income (rate per 1,000)	108	9.4	12.7

Health Care

Children, ages 0-18, insured by...			
– Medicaid	3,698	31.2%	27.5%
– MICHild	204	1.7%	1.3%
Children, ages 1-14, hospitalized for asthma ⁴ (rate per 10,000)	16	18.5	25.4

Juvenile Justice — 2002

Ages 10-17 (rates per 1,000)

Violent crime arrests	50	9.1	3.3
Property crime arrests	276	50.3	19.9

¹ All percentages are percent of all children except for Students in Special Education.² Family Independence Program.³ Federal Food Stamp Program.⁴ Rate is reported for the three-year period 2000-2002 only for counties with a total number over 19.

* Rate not calculated because of low incidence of events or unavailable data.

Note: All data are from 2003 unless otherwise noted.

Trends in Child Well-Being

	Percent Change in Rate					Base year		Recent year		
	Worse		0	Better		Number	Rate	Number	Rate	Rank ¹
	80	60	40	20	0	20	40	60	80	
Economic Security 1995 vs. 2000										
Children in poverty.										
– ages 0-17										
– ages 5-17										
Students receiving free/reduced priced school lunches (1995-96 vs. 2003-04)										
Child Health Avg 1994-96 vs. 2000-02										
Less than adequate prenatal care										
Low-birthweight babies										
Infant mortality (per 1,000)										
Child deaths, ages 1-14 (per 100,000)										
Child Safety (per 1,000) FY1995 vs. FY2003										
Children in investigated families										
Confirmed victims of abuse or neglect										
Children in out-of-home care										
– abuse or neglect										
– delinquency										
Adolescence Avg 1994-96 vs. 2000-02										
Births to teens, ages 15-17 (per 1,000)										
Deaths by accident, homicide, suicide for teens ages 15-19 (per 100,000)										
High school dropouts (1995-96 vs. 2001-02)										
Education 2001-02 vs. 2003-04 (Students not meeting proficiency standards in math)										
Fourth graders										
Eighth graders										
Class of 2001 vs. class of 2003										

¹ A ranking of 1 means a county has the "best" rate compared to other counties in the state.

Missing bars indicate no change or a rate could not be calculated. Percentage change is calculated with unrounded rates.

* Sometimes a rate could not be calculated because of low incidence of events or unavailable data.