

## Focus on Young Children



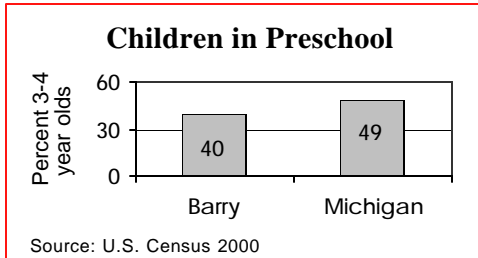
### Live Births

	1990	1996	2002
	733	714	701

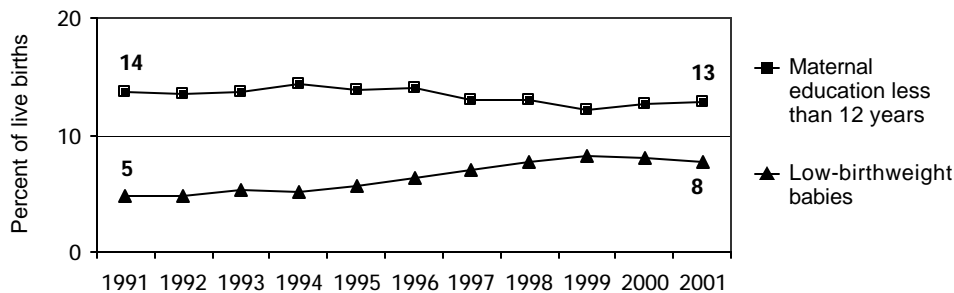
	Number	Percent	Michigan
No listed paternity (2002)	52	7.4%	13.6%
Birth defects (1999-2001)	36	5.0%	6.3%
Lead poisoning in toddlers, ages 1-2			
– tested	363	24.6%	19.2%
– poisoned (% of tested)	2	0.6%	3.3%

### Child Care & Early Education

	Infants	Toddlers	Preschool	School-age
Monthly costs (full-time/one child - 2004)	\$465	\$445	\$429	\$412
– percent average wage per job	20.0%	19.2%	18.5%	17.8%
Children in subsidized child care				
– ages 0-30 mos.	236			
– ages 31 mos.-5 yrs.	346			
– ages 6-12	324			
Total (includes children over age 12)	914			



### Infants at Risk: 1990-2002 (three-year rolling averages)



Source: Michigan Department of Community Health, Vital Records and Health Data Development Section

## Background

### Population

	2000	2003
Total population	156,909	58,774
Child population		
– ages 0-17	15,292	14,854
– ages 0-4	3,739	3,534
– ages 5-9	4,249	3,960
– ages 10-14	4,575	4,536
– ages 15-19	4,180	4,461

### Economic Climate

Average wage per job (2002)	\$27,835
Unemployment	5.2%
Percent change in Food Assistance Program Participation (2001 vs. 2003)	59.0%

### Economic Security

	Number	Rate <sup>1</sup>	Michigan <sup>1</sup>
Children with child support order (April 04)	5,309	35.2%	38.5%
– average amount received per child	\$190	—	\$180
– percent non-custodial parents making no payment in previous six months	—	52.6%	51.5%
Children receiving FIP cash assistance <sup>2</sup>	359	2.4%	6.0%
Children in Food Assistance Program <sup>3</sup>	1,549	9.7%	14.8%

### Children with Special Needs

Students in Special Education	1,000	12.3%	14.3%
Children receiving Supplemental Security Income (rate per 1,000)	83	5.5	12.7

### Health Care

Children, ages 0-18, insured by...			
– Medicaid	3,425	21.5%	27.5%
– MICHild	186	1.2%	1.3%
Children, ages 1-14, hospitalized for asthma <sup>4</sup> (rate per 10,000)	12	11.0	25.4

### Juvenile Justice — 2002

#### Ages 10-17 (rates per 1,000)

Violent crime arrests	24	3.2	3.3
Property crime arrests	146	19.6	19.9

<sup>1</sup> All percentages are percent of all children except for Students in Special Education.

<sup>2</sup> Family Independence Program.

<sup>3</sup> Federal Food Stamp Program.

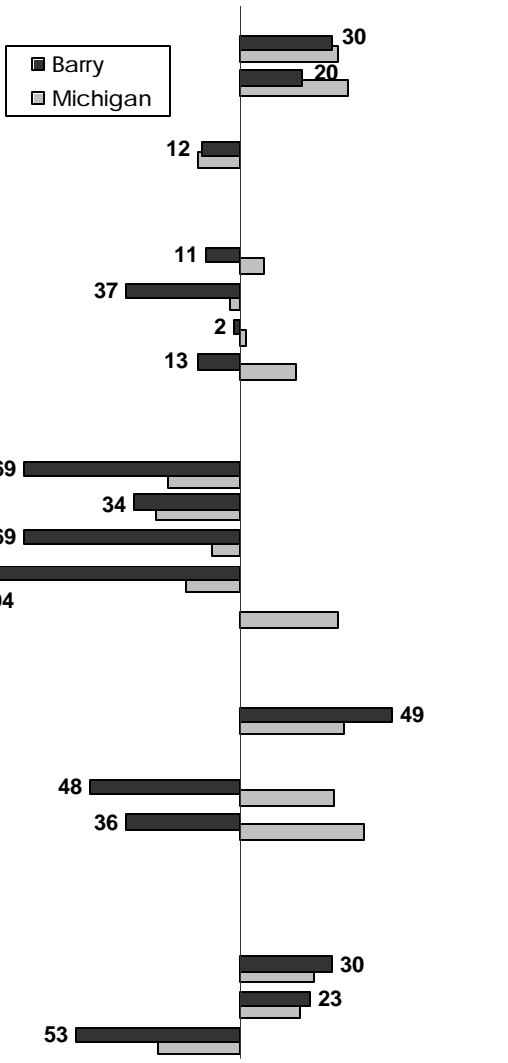
<sup>4</sup> Rate is reported for the three-year period 2000-2002 only for counties with a total number over 19.

\* Rate not calculated because of low incidence of events or unavailable data.

Note: All data are from 2003 unless otherwise noted.

## Trends in Child Well-Being

	Percent Change in Rate						Base year		Recent year			
	Worse			Better			Number	Rate	Number	Rate	Rank <sup>1</sup>	
	80	60	40	20	0	20	40	60	80			
<b>Economic Security 1995 vs. 2000</b>												
Children in poverty.												
– ages 0-17							1,752	11.9%	1,224	8.2%	7 of 83	
– ages 5-17							929	8.5%	781	6.7%	7 of 83	
Students receiving free/reduced priced school lunches (1995-96 vs. 2003-04)							1,650	21.1%	1,907	23.6%	10 of 82	
<b>Child Health Avg 1994-96 vs. 2000-02</b>												
Less than adequate prenatal care							131	18.5%	146	20.5%	39 of 82	
Low-birthweight babies							40	5.7%	55	7.7%	68 of 83	
Infant mortality (per 1,000)							3	4.6	3	4.7	4 of 55	
Child deaths, ages 1-14 (per 100,000)							3	22.6	3	25.6	24 of 40	
<b>Child Safety (per 1,000) FY1995 vs. FY2003</b>												
Children in investigated families							689	45.9	1,169	77.5	47 of 83	
Confirmed victims of abuse or neglect							102	6.8	137	9.1	31 of 82	
Children in out-of-home care							24	1.6	41	2.7	6 of 80	
– abuse or neglect							20	1.3	39	2.6	9 of 79	
– delinquency							4	*	2	*	* of 51	
<b>Adolescence Avg 1994-96 vs. 2000-02</b>												
Births to teens, ages 15-17 (per 1,000)							31	25.4	18	12.9	24 of 81	
Deaths by accident, homicide, suicide for teens ages 15-19 (per 100,000)							2	63.1	4	93.2	36 of 43	
High school dropouts (1995-96 vs. 2001-02)							68	3.1%	106	4.2%	61 of 79	
<b>Education 2001-02 vs. 2003-04</b> (Students not meeting proficiency standards in math)												
Fourth graders							127	22.0%	86	15.4%	7 of 82	
Eighth graders							202	35.6%	188	27.4%	21 of 82	
Class of 2001 vs. class of 2003							128	25.0%	219	38.1%	40 of 82	



<sup>1</sup> A ranking of 1 means a county has the "best" rate compared to other counties in the state.

Missing bars indicate no change or a rate could not be calculated. Percentage change is calculated with unrounded rates.

\* Sometimes a rate could not be calculated because of low incidence of events or unavailable data.